

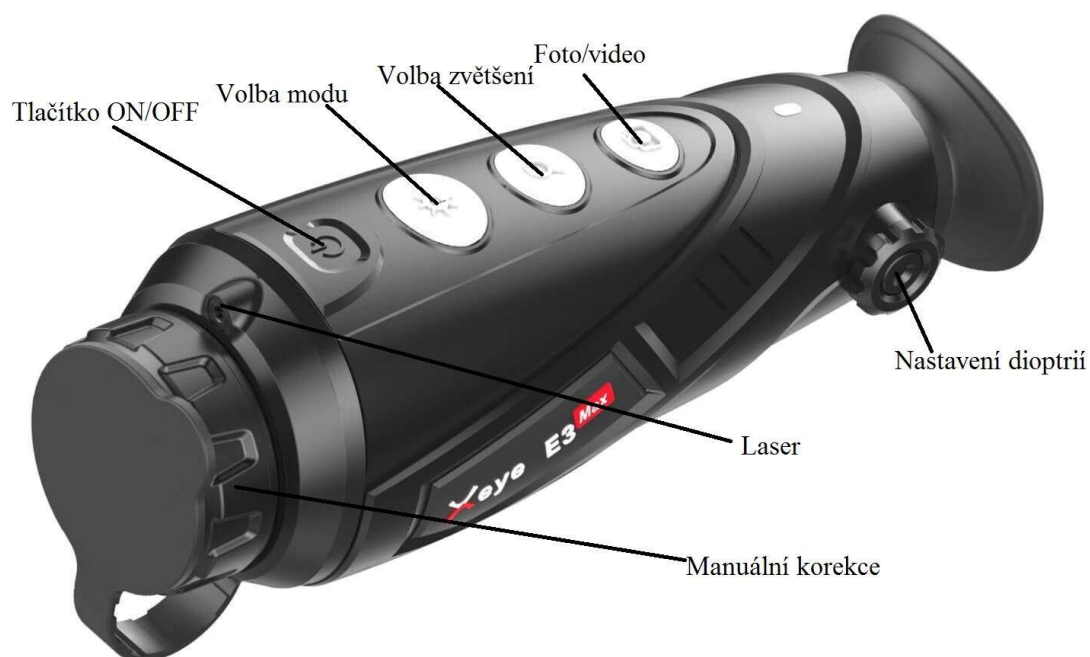


Thermal imaging InfiRay E6Pro V3

Thermal imaging monocular

Enlarge	2.9 x optical, 2x, 4x digital
Resolution, kernel type	640x512 px, VOx 12 µm
Lens lens diameter	50 mm
Lens focusing	Manual
Field of view	8,8° x 7°
Lens system	F1:0
Image refresh rate	50 Hz (PAL) / 60 Hz (NTSC)
Display type	OLED, 1024x768px
Colour palette	Warm black, warm white, warm red, rainbow
Video output for displaying the observed image on an external monitor	Yes
Wi-Fi	Yes
Internal memory	32 GB
Taking pictures, videos	Yes
Laser pointer	No
LED flashlight	No
Waterproof	IP66
Battery type	built-in, Li-Ion 3.7v, 3600 mAh
Battery life	6 h
Temperature range in use	-20°C / +50°C
Dimension	202 mm x 65 mm x 64 mm
Weight	500 g
Warranty	36 months

Basic Specifications:



Basic procedure for using the instrument

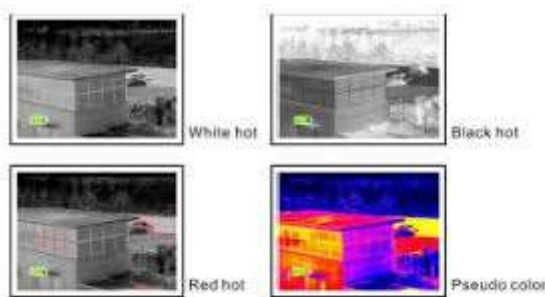
1. Switching on the device
2. Correction of diopters
3. Manual image sharpening
4. Magnification/Mode selection
5. Switching off the device

ON/OFF button, STANDBY STANDBY

- ON/OFF: Press the power button for 3 seconds to turn on the camera. The indicator light will illuminate and the trigger screen will be displayed in the inner eyepiece
- Power Off/OFF: Press the power button for 3 seconds to turn off the camera. The camera will turn off automatically if you are not performing any operation and the unit is in standby or normal mode.
- Standby: Press the ON/OFF button briefly to put the camera into standby mode (indicated by a flashing light). Press the ON/OFF button again briefly to return the camera from standby mode to normal mode.

Display mode selection

- Short presses of the mode selector button toggle the switched-on camera between colour display modes. You can choose between WHITE HOT, BLACK HOT, RED HOT and SPIRIT MODE (pseudo color)



Magnification selection

- To select zoom in or out, press the zoom button repeatedly. The image digitally zooms in a 1x-2x-4x cycle

Saving captured images

- A short press of the button after capturing a PHOTO/VIDEO image puts the powered device into storage mode. The camera icon will appear in the upper right corner. Another short press to take a photo, a long press to take a video recording. In case of video recording, there will be a camera icon in the upper right corner.
- To stop recording, press the PHOTO/VIDEO button again for a long time and wait about 2 minutes before the images and video recordings are successfully saved. You can then put the camera into standby mode or switch it off, the recording will automatically switch off.

Adjusting diopters

- Rotate the wheel to the desired position to fine-tune the image - adjusting the dioptic deviations.

Menu

- To enter the menu, long press the zoom button. Use the mode buttons and the PHOTO/VIDEO button to move up and down through the menu items. Use the zoom button to confirm your selection.

- WI-FI, picture brightness, video output, calibration mode, power saving mode, PIP FUNCTION and factory settings can be set in the menu.
- To save the settings and exit the menu, long-press the button to select zoom.
- PIP - picture in picture

Video output (for displaying the image on an external monitor)

- Select Video Output from the menu, and the video output icon will appear in the bottom right corner of the device display. Next, connect the camera using the USB output with an external monitor. Check that your external monitor supports the input port supplied with the camera.

Calibration

- In order to obtain a clear image without grain, jitter and other undesirable characteristics, it is necessary to perform image calibration. There are two correction options 1) automatic (S) calibration and 2) manual (B). Set the selected repair selection in the menu. Automatic calibration is performed automatically without any user assistance. Manual calibration is performed by pressing the magnification selection button and the PHOTO/VIDEO button simultaneously. Manual calibration is performed with the lens cap on, you can remove the lens cap after manual calibration is complete.

Saving mode

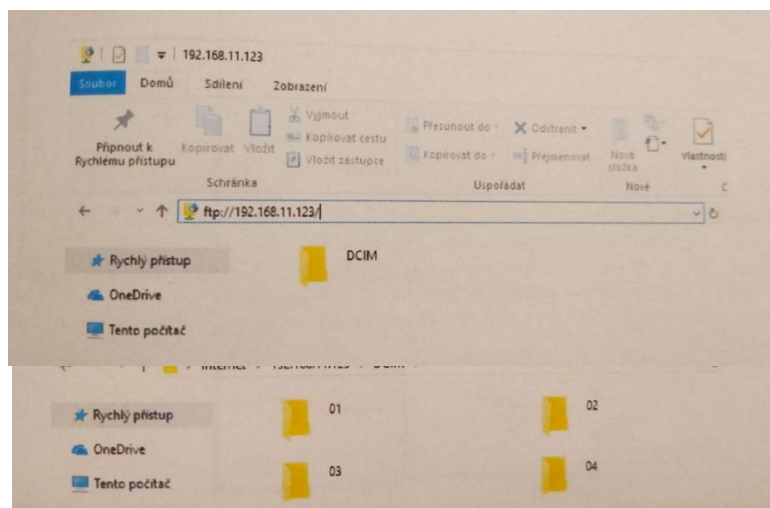
- Battery life can be extended up to 8 hours by activating the power saving mode in the menu. The activated power saving mode is indicated by the "S" icon on the left side of the battery icon.
- When the camera is in power saving mode you cannot use Wi-Fi, video recording or photography.

Charging

- Fully charged battery - indicator glows green
- Low battery/charging device - indicator lights red
- The USB hole can be found at the bottom of the dock
- For charging, use the supplied USB cable to plug into the USB port on the device
- After charging, close the USB output cover

Download photos and videos to your PC/laptop

- The images and videos stored on the device can be downloaded to an external device as follows:
- Activate Wi-Fi in the menu
- Activate the video output in the menu
- Connect an external device via Wi-Fi called Xinfraed Xeye E6+, password for connection: 12345678
- in your browser or file explorer, type the address: <ftp://192.168.11.123> and confirm with enter
- Open the DCMI file with the individual files saved to the external device. Once saved, the images/videos are accessible and can be viewed and edited



Transferring data to your mobile phone

To download captured photos/videos from your device to your smartphone the Xeye app is designed for online monitoring of the camera image. This app also allows you to create photos or videos via your mobile phone. The app can be downloaded via Google Play or the App store.

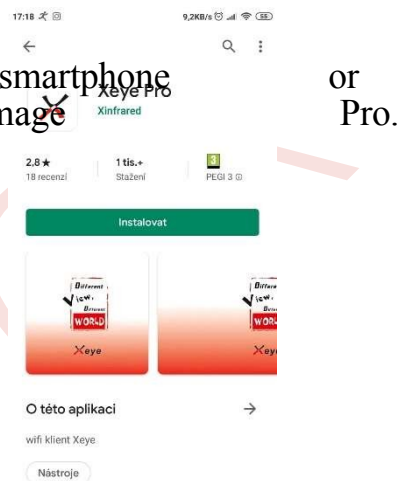
If needed, make internal settings that the app prompts you to make (needs may vary by phone model).

- Activate Wi-Fi in the camera via the menu
- Use the menu on the camera to turn on the video output
- Connect your mobile phone via Wi-fi with the camera name (Xeye 3pro), password: 12345678

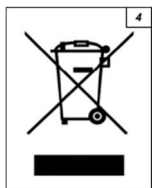
If you want to change the Wi-Fi name or password, enter the new information and click "submit" to submit. The factory reset button is used to reset to factory settings.

Download photo/video

- When the camera and mobile phone are properly connected, the current thermal imaging image is displayed when the app is launched.
- In the armchair explorer, select Remote File (all images and videos are stored here)
- Local File (photos/videos stored on PC/mobile), Remote file (photos/videos stored on thermal imaging camera)
- To view photos/videos, you must first move these files to an external device (mobile/PC)
- To save the images, long press the desired photo preview and a menu of options will appear on the right - select DOWN LOAD to download
- The photo is then saved on your mobile phone and is ready to be viewed



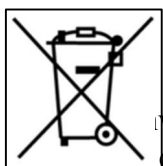
Important information



Disposal of electrical equipment

This product is labelled in accordance with the European Directive on the disposal of electrical and electronic equipment.

This symbol on the product or in the accompanying documentation indicates that the used product must not be disposed of with municipal waste as it may contain substances hazardous to environment. After decommissioning, take the product to designated collection points for recycling or environmentally friendly disposal. For information on collection points, contact your dealer, local authority or Asekol (www.asekol.cz).



Disposal of batteries

As spent batteries and accumulators can contain substances that are hazardous to the environment, they do not belong in regular municipal waste. If there are replaceable batteries with EV devices, please take them to the designated collection points for environmentally friendly disposal.

For information on collection points, contact your dealer, local authority or Asekol (www.asekol.cz)



The product bears the European conformity mark in accordance with EU regulations

The manufacturer hereby declares that the product is safe for the use for which it is intended and that during its manufacture control and other measures are carried out to ensure compliance of the product with the essential requirements and the technical documentation.